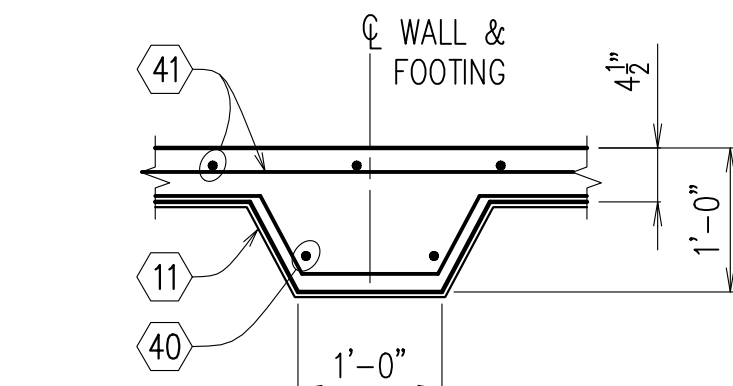


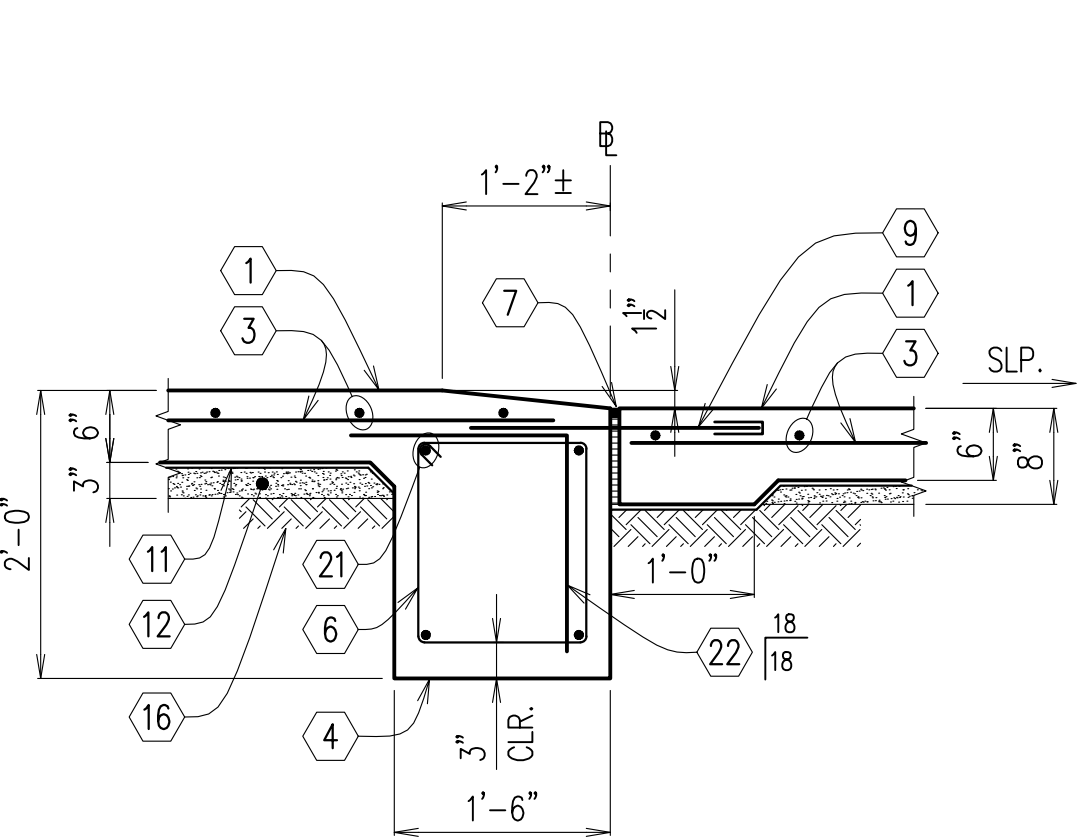
2/2021 - 8/2023 7824 - natchitoches fire station/ preliminary plans (structural) 7824_foundation plan & details
2/2023 10/14/2023 Y.M.

PILASTER SCHEDULE						
MARK	SIZE			REINFORCING		TIES
	WIDTH	LENGTH	DEPTH	WIDTH	LENGTH	
P3.0	3'-0"	3'-0"	2'-0"	#4 @ 18"	#4 @ 18"	(2) #4
P4.0	4'-0"	4'-0"	2'-0"	#4 @ 18"	#4 @ 18"	(2) #4
P5.5	5'-6"	5'-6"	2'-0"	#4 @ 18"	#4 @ 18"	(2) #4

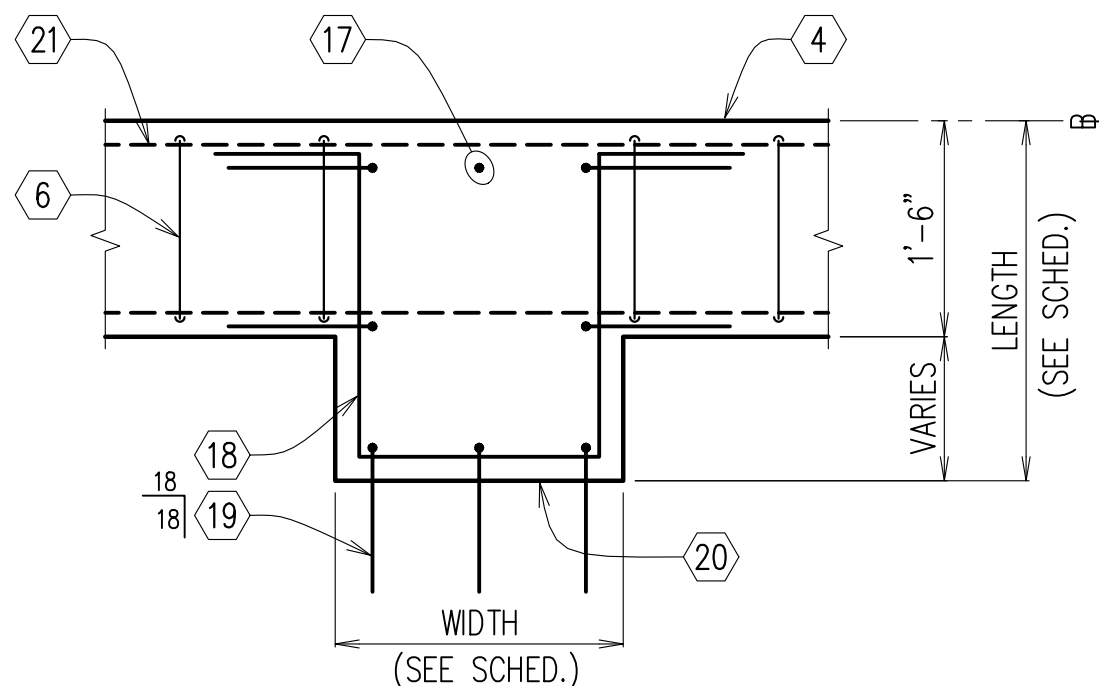
11
S201 **PILASTER SCHEDULE**
N.T.S.
RE: 7/S201, 10/S201



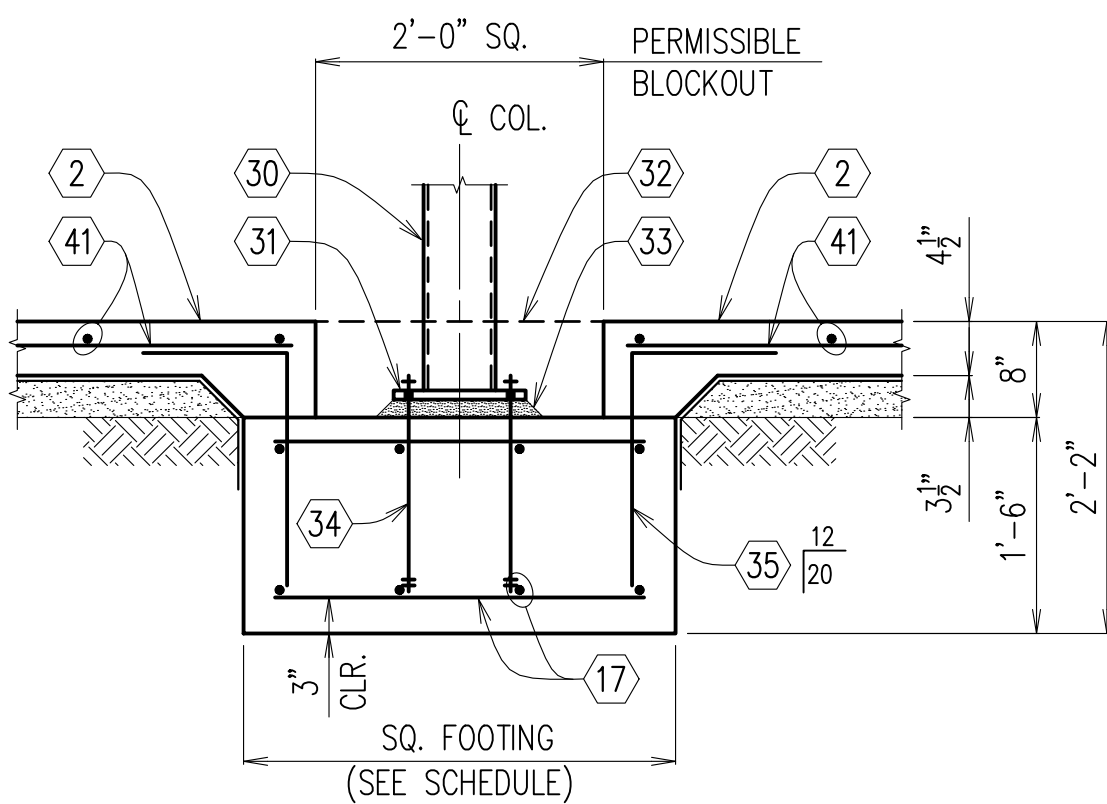
6
S201 **SECTION**
SCALE: 3/4" = 1'-0"
RE: 1/S200



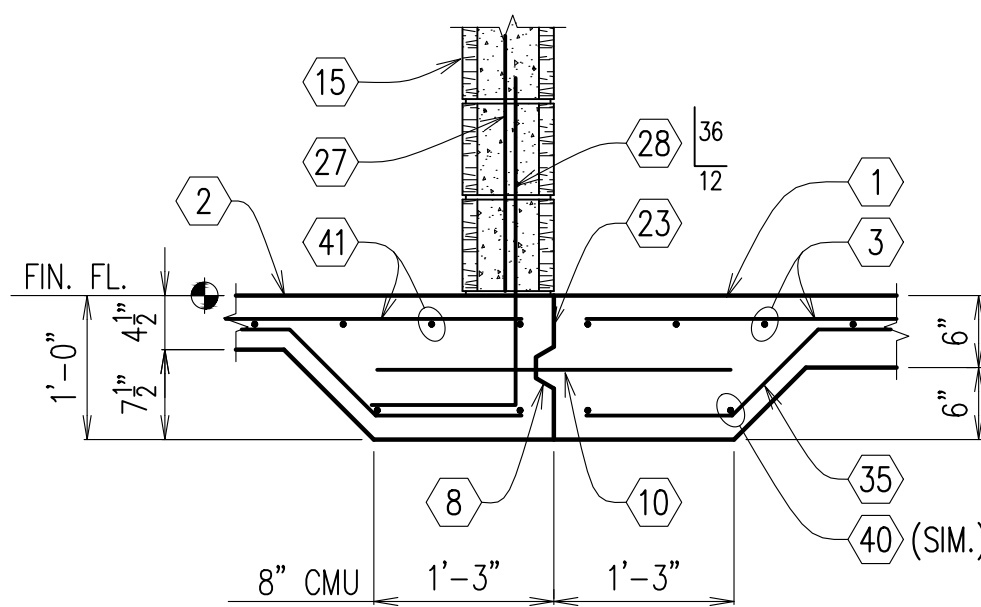
1
S201 **DETAIL @ ROLL UP DOORS**
SCALE: 3/4" = 1'-0"
RE: 1/S200



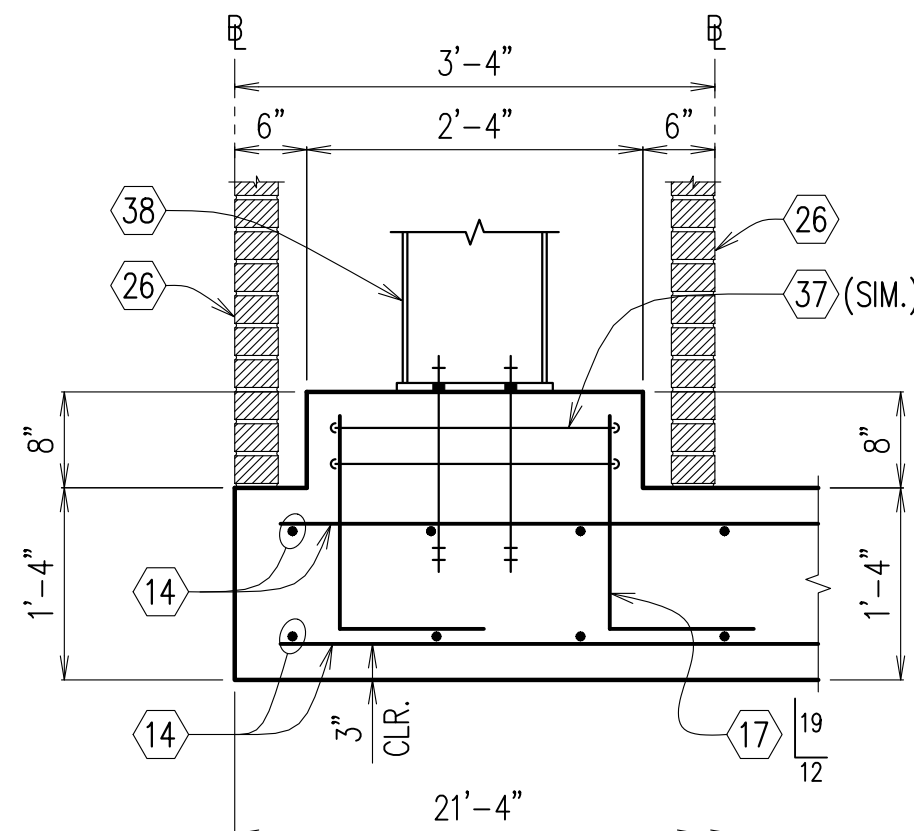
7
S201 **PLAN/DETAIL @ PILASTER**
SCALE: 3/4" = 1'-0"
RE: 1/S200



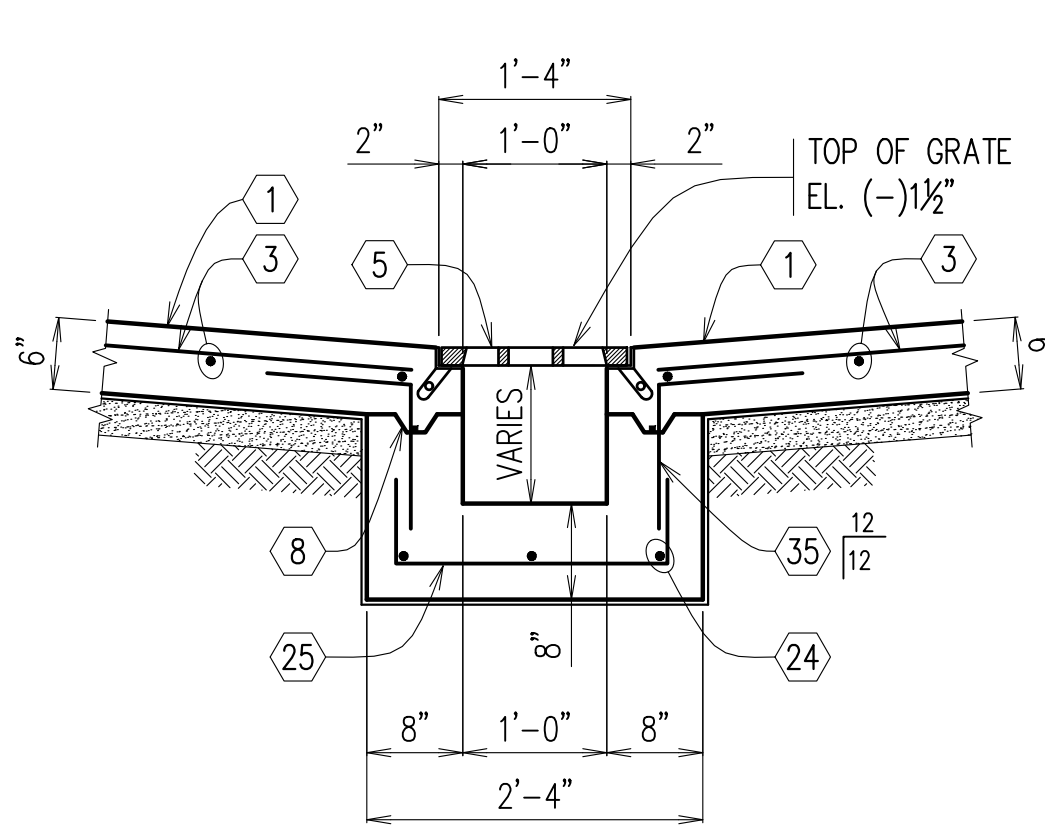
12
S201 **SECTION @ INTERIOR FTG.**
SCALE: 3/4" = 1'-0"
RE: 1/S200
RE: 1/S201 FOR ADD'L. INFO.



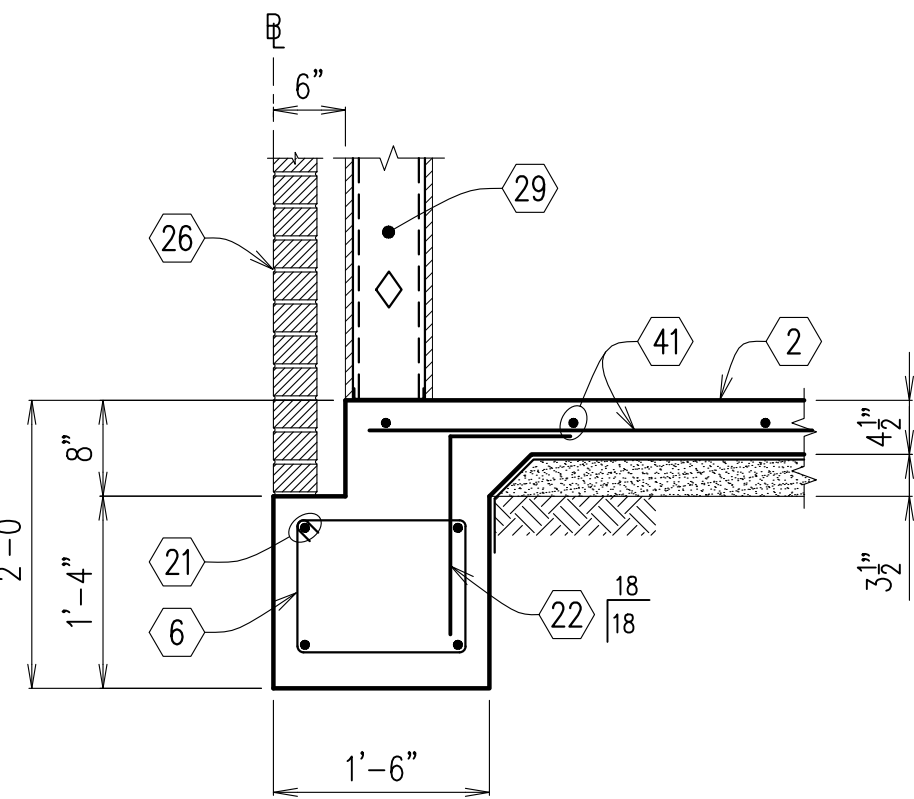
2
S201 **SECTION @ C.J.**
SCALE: 3/4" = 1'-0"
RE: 1/S200
RE: 1/S201 FOR ADD'L. INFO.



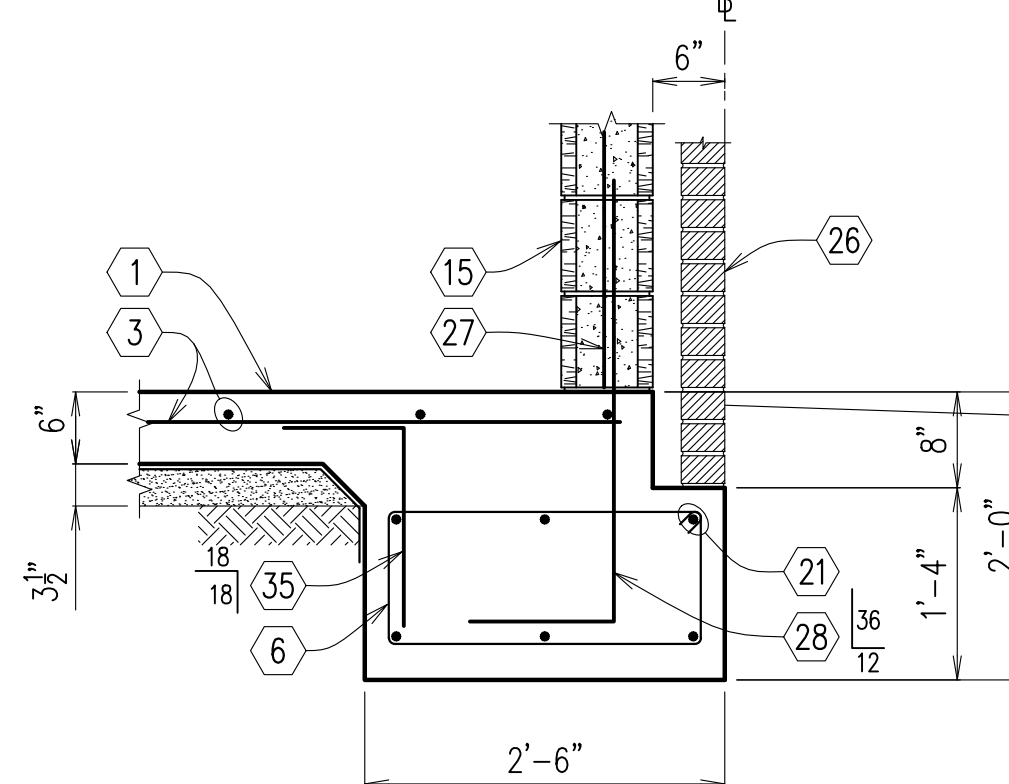
8
S201 **SECTION**
SCALE: 3/4" = 1'-0"
RE: 1/S200



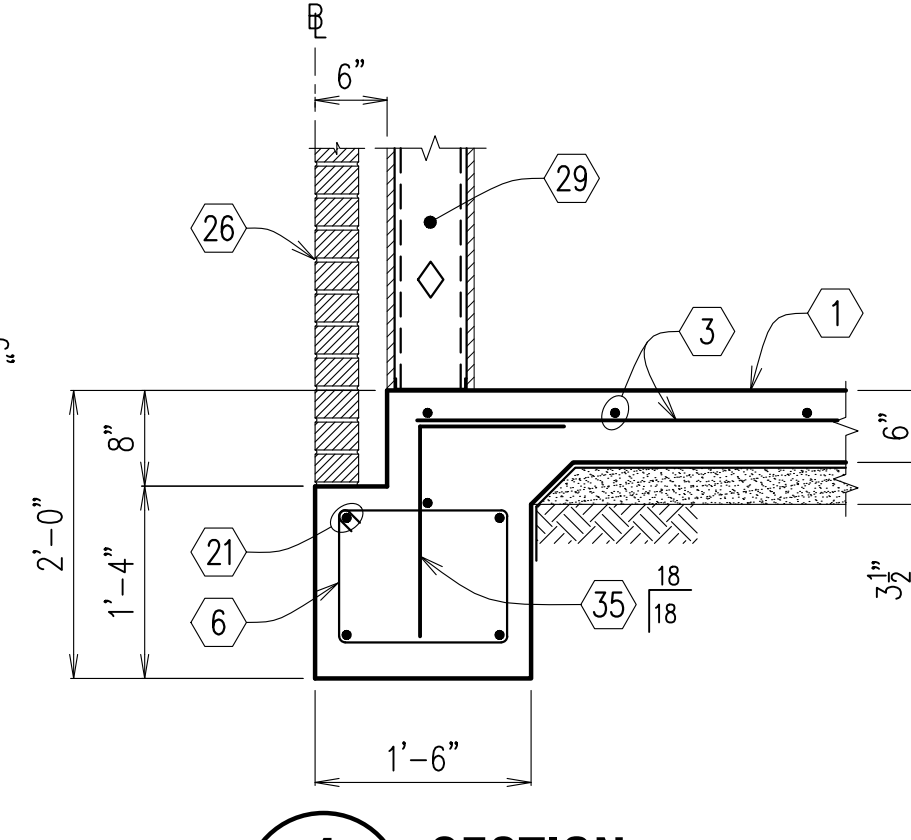
3
S201 **FLOOR DRAIN SECTION**
SCALE: 3/4" = 1'-0"
RE: S200
RE: 1/S201 FOR ADD'L. INFO.



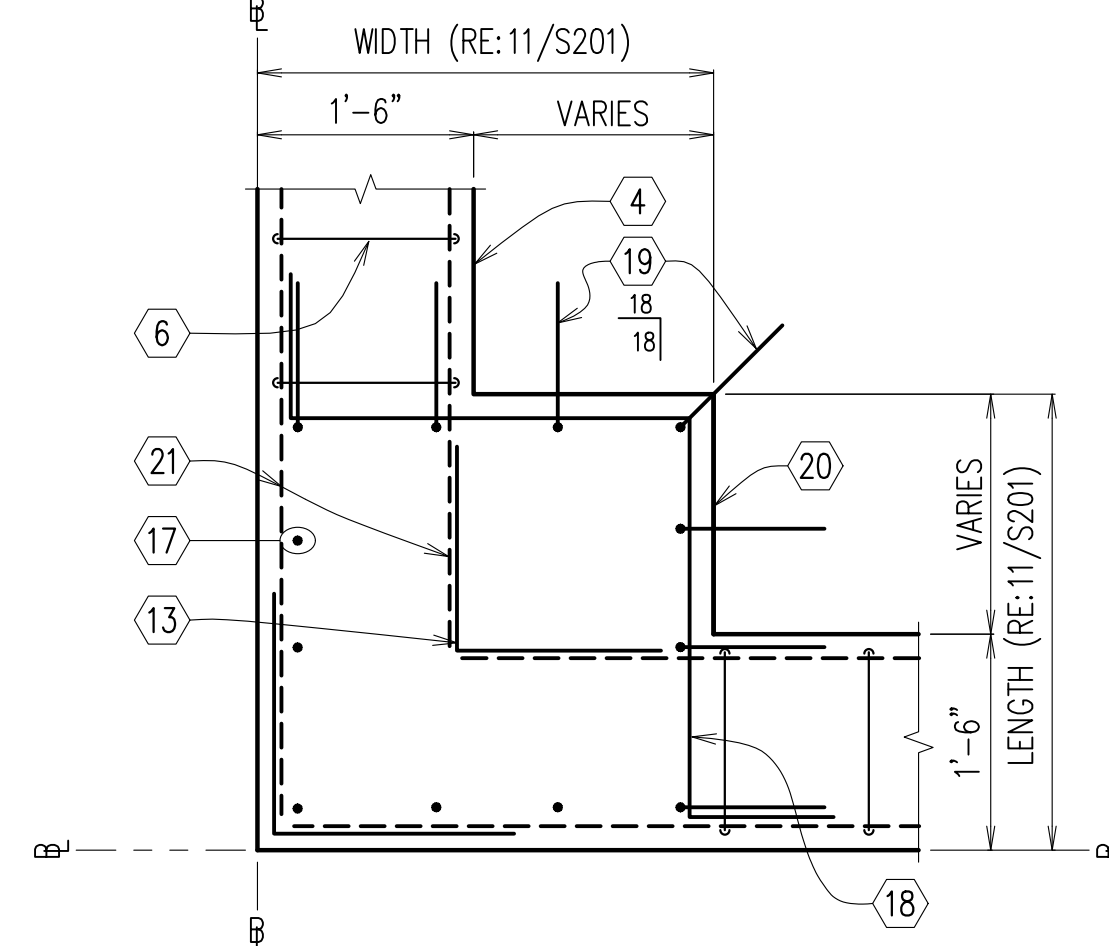
13
S201 **SECTION**
SCALE: 3/4" = 1'-0"
RE: 1/S200
RE: 1/S201 FOR ADD'L. INFO.



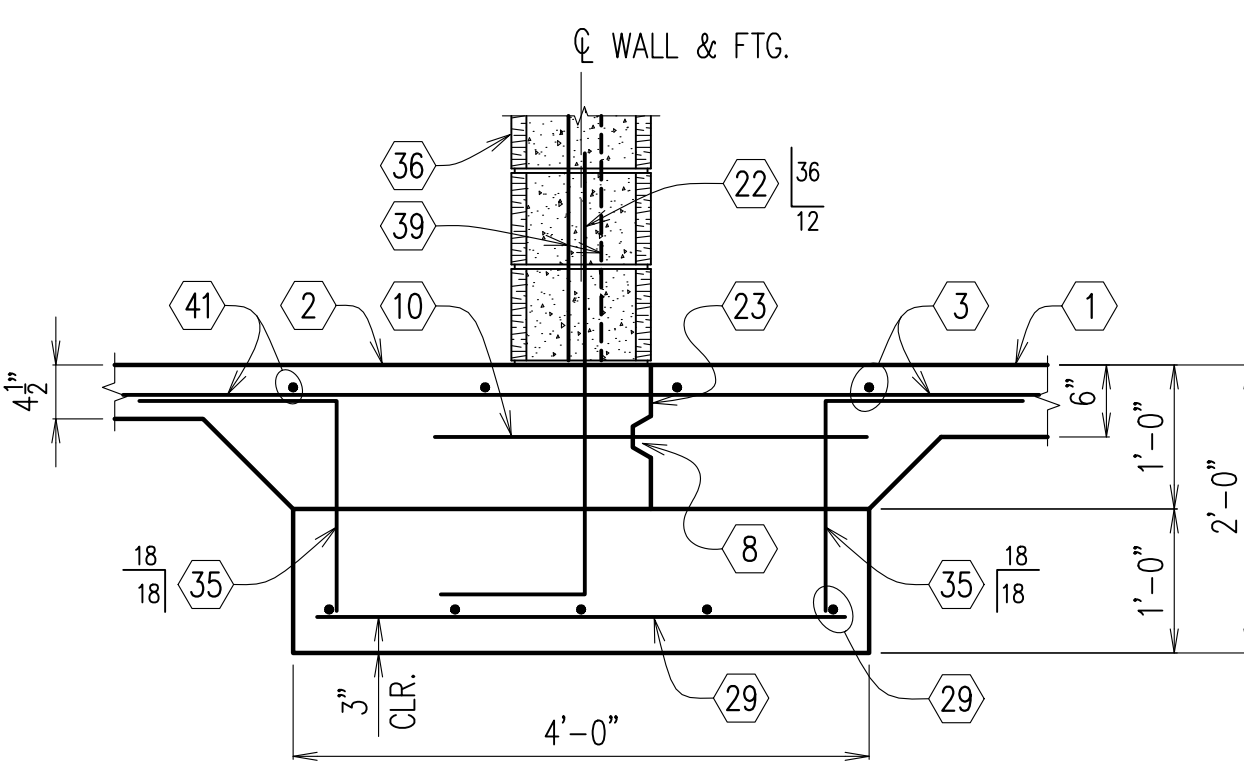
9
S201 **SECTION**
SCALE: 3/4" = 1'-0"
RE: 1/S200
RE: 1/S201 FOR ADD'L. INFO.



4
S201 **SECTION**
SCALE: 3/4" = 1'-0"
RE: 1/S200, 2/S200
RE: 1/S201 FOR ADD'L. INFO.



10
S201 **PLAN/DETAIL @ CORNER PILASTER**
SCALE: 3/4" = 1'-0"
RE: S200



14
S201 **SECTION**
SCALE: 3/4" = 1'-0"
RE: 3/S200

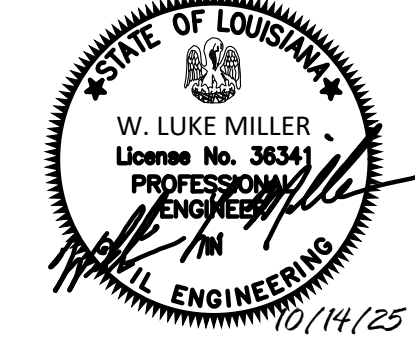
KEY NOTES (THIS SHEET ONLY)

- 6" CONCRETE SLAB (4,000 PSI)
- 4 1/2" CONCRETE SLAB (3,500 PSI)
- No. 5 BARS @ 16" O.C.E.W.
- PERIMETER GRADE BEAM
- FLOOR DRAIN W/ GRATING
- No. 4 TIES @ 16" O.C.
- 1/2" EXPANSION JOINT
- KEYED JOINT
- 3/4" SMOOTH DOWEL @ 16" O.C. @ O.H. DOORS
- No. 5 DOWEL @ 32" O.C. (U.N.O.)
- 10 MIL VAPOR BARRIER
- 3 1/2" CLEAN SAND CUSHION
- CORNER BAR (RE: S100)
- No. 6 @ 12" O.C.
- 8" CMU WALL
- COMPACTED SELECT FILL
- PILASTER REINF. (RE: 11/S201)
- PILASTER TIE (RE: 11/S201)
- SLAB DOWEL (8) No. 4 PER PILASTER
- PILASTER (RE: 1/S200, 11/S201)
- No. 6 BARS CONT. (TOP & BOTTOM)
- No. 4 BENT BAR @ 16" O.C.
- CONSTRUCTION JOINT
- CONT. No. 4 BAR
- CONT. No. 4 DEFORMED BAR @ 16" O.C.
- BRICK VENEER (RE: ARCH)
- No. 5 BAR @ 32" O.C.
- No. 5 DOWEL @ 32" O.C. (60" LONG)
- METAL STUDS (RE: ARCH.)
- PEMB TUBE STEEL COLUMN (RE: VENDOR)
- BASE PLATE (RE: VENDOR)
- PERMISSIBLE BLOCKOUT
- 1 1/2" GROUT BED
- ANCHOR BOLTS (RE: 8/S100)
- No. 5 BENT DOWEL @ 16" O.C.
- 12" CMU WALL
- No. 4 TIES @ 12" O.C.
- PEMB COLUMN (RE: VENDOR)
- No. 6 BARS @ 8" O.C. (STAGGER) (RE: S101)
- CONT. No. 6 BAR
- No. 4 @ 16" O.C.

Consultant

Design Phase Acceptance

Permit/Seal



Client/Project
CITY OF NATCHITOCHES

NEW FIRE STATION NO. 3

NATCHITOCHES, LOUISIANA

Project No.: 222706059

File Name: 7824_FOUNDATION PLAN & DETAILS

Scale:

2025.09.26

Dwn. Dign. Chkd. YYYY.MM.DD

Title FOUNDATION
DETAILS

Revision: Sheet: of
Drawing No.

S201

mml&h

MEYER, MEYER, LeCROIX & HIXSON, Inc.
ENGINEERS & LAND SURVEYORS
ALEXANDRIA, LOUISIANA

PROJ. NO. 7824 DATE: 7/11/25

DESIGN: WLM DRAWN: GO